

# LMS-3200 S1

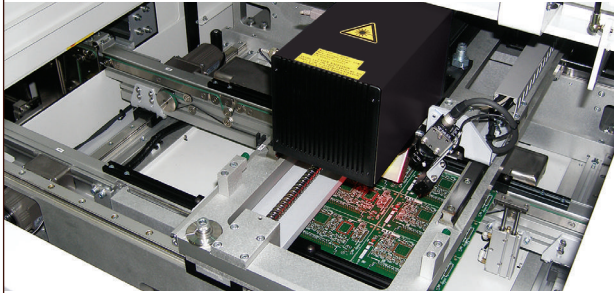
*Laser Marking System*



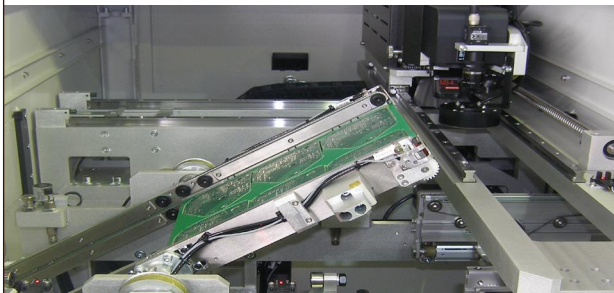
The Laser Marking System LMS-3200 S1 is specially designed to accurately mark PCB within a production line or as a stand alone system. The PCB is locked in its marking position while the CO<sub>2</sub> laser is moved using servo controlled X-Y axis. The user friendly Windows™ based software allows easy programmable marking position and number of markings.

## Features

- 10 Watt CO<sub>2</sub> (Class 4)
- Class 1 laser protected housing
- Air cooling system
- Fume extraction device
- User friendly software
- Digitally controlled linear axis for X & Y movements
- Selectable by-pass operation
- Automatic width adjustment conveyor
- PCB side clamping
- PCB lifting system for constant focal point
- Short product change-over time
- Barcode scanner or camera for readability check
- Industrial PC & 17" LCD monitor
- SMEMA compatible



Standard Laser Marking System

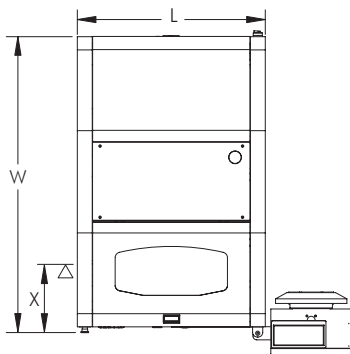


Laser Marking System (with inverting option)

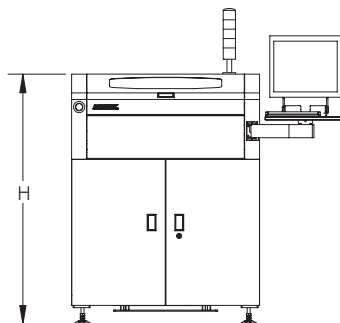
## Technical Specification

Laser type	: 10 Watt, CO <sub>2</sub> , air cooled
Wave length	: 10.63 μm
Laser class	: Class 4
Housing class	: Class 1
Marking area	: 70 x 70 mm per position 508 x 460 mm total coverage
Laser spot size	: 180 μm
Marking speed	: 225 characters/sec (max.)
Marking types	: Text, barcodes, 2D codes and graphics
Conveyor type	: 3 mm ESD edge belt
Conveyor width	: Automatic width adjustment by program
Conveyor speed	: 18 m/min
PCB transfer time	: ± 5 seconds
Applicable PCB width	: 65 - 460 mm
Applicable PCB length	: 80 - 508 mm
PCB transfer height	: 950 ± 25 mm (or specify)
Component clearance	: Top 35 mm, bottom 35 mm (or specify)
Conveyor flow direction	: Left to right (or specify)
Conveyor interface	: SMEMA
Operating system	: Windows XP™
Network interface	: Ethernet
Monitor	: 17" LCD Monitor
Power supply	: 230VAC, 50Hz, 1Ph
Power consumption	: 750VA max.
Air supply	: 4 - 6 bar
Air consumption	: 2 ltr/min max.
External dimensions (L x W x H)	: 1000 x 1532 x 1330 mm
Weight	: 640 kg
Colour	: RAL 9002
Noise level	: max. 65dB

## Physical Characteristics



Top View



Front View



**LASER TEK** (SINGAPORE) PTE LTD  
雷科(新)私人有限公司

**Laser Tek Singapore Pte. Ltd.**

33 Ubi Avenue 3, #02-42/43, Vertex,  
Singapore 408868

Tel: (65) 6742 8260 Fax (65) 6742 3719

http://www.lasertek.com.sg

**LASER TEK** TAIWAN Co. LTD  
雷科技股份有限公司

**Laser Tek Taiwan Co., Ltd**

No. 248-12, Shin Sheng Rd., Chien-Zhen District,  
Kaoshiung, Taiwan 806, R.O.C.

Tel: 886-07-8159877 Fax: 886-07-8156711

http://www.lasertek.com.tw